

# ReSiTec

ReSiTec is specializing in handling, recovery and treatment of powders, liquids and suspensions. Our services ranges from pre-studies, testing and verification in pilot to final project execution.



[www.resitec.no](http://www.resitec.no)

## ReSiTec experiences through EIT Raw Materials membership

EIT RM Metal processing event - 20.11.18

Håkon T. S. Jørgensen



# ReSiTec, about:

- ReSiTec AS is a technology company specializing in handling and treatment of powder and slurry.
- ReSiTec is centrally located in Kristiansand, Norway where we have a full scale pilot plant, laboratories and other facilities that enables us to offer a wide range of development and production services to the industry.
- ReSiTec operates a beneficiation plant outside Kristiansand where we produce and recycle valuable metals and mineral powders for special industrial applications.



ReSiTec Krossen



ReSiTec Glamsland

# Resitec: Business Areas

**ReSiTec AS is specializing in powder technology.**

➤ **Research and development services:**

Resitec is offering development and pilot services to a wide range of industry. Many of our projects are related to circular economy and recycling of valuable raw materials.

➤ **Recycling of silicon kerf:**

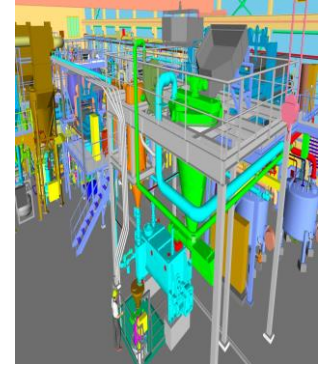
ReSiTec has wide experience and know-how in recycling of silicon kerf generated in the production of photovoltaic wafers. We offer customers technical solutions and support.

➤ **Production of silicon, quartz and mineral powders:**

ReSiTec is a producer of high purity silicon powder and mineral powders recycled from various process industry.



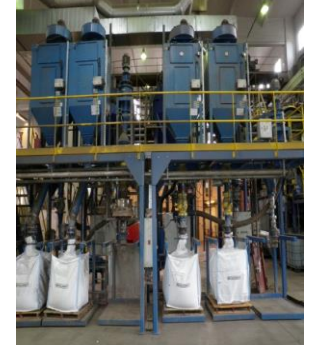
Powder & slurry technology



Process design



Pilot testing



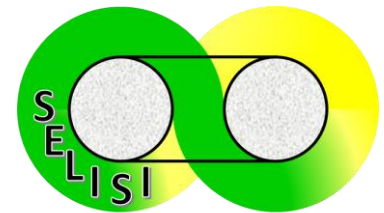
Powder processing

# ReSiTec and EIT RM

- ReSiTec is the first Norwegian industrial member of EIT Raw Materials
  - Member of the Baltic CLC since 2017
- The CLC Team does a great job trying to match make the different partners to find potential synergies and projects
- A truly unique network of member companies and universities
- Applying for a project feels more manageable than e.g. Horizon 2020 projects
  - The EIT team in your CLC is there to back you up and facilitate you through the process

# SELISI – SEcond Life of Silicon

- Recycling of silicon wafer-kerf from the PV-industry
  - 40 % of the silicon from an ingot is lost during wafering, estimated to 40 000 tons per year
  - The projects aims to re-introduce the recycled powder in to the PV manufacturing chain
  - The main challenge both technical and economical is to purify the powder to make it suitable for PV application
- Duration 01/2018 – 03/2020
- Budget – 1.9 M€



# The RACE

- The Raw Materials RACE
  - Organized by the EIT RM academy
  - A journey along the raw materials value chain
- The challenge themes:
  - Circular business models stimulating innovation
  - Digitalisation for optimising processes



# The RACE

- **Leg 1** – Mining and exploration,
  - Finland, Outotec
- **Leg 2** – Turning raw materials in to products
  - Sweden, Höganäs
- **Leg 3** – Reuse and recycling,
  - Belgium, Umicore



# Brokerage event

- Annual event in Berlin in conjunction with the General Assembly
  - just prior to the start of a new call for projects
- Everybody who has an idea for a new project for the upcoming call can pitch it in various sessions
- Speed dating
  - 15 minutes meetings with representatives from the various member companies and universities to discuss projects and opportunities
    - Has already led to further discussion with one company on possible projects
- General networking



# What else is available?

- Meetings
  - Workshops
  - Seminars
  - Education
- 
- In short, something is happening every day connected to EIT Raw Materials



# Concluding remarks

- Our goal in ReSiTec is to be an active partner of EIT Raw Materials
  - Have at least one ongoing project at all times
  - Explore and utilize the network
  - Attend other ongoing activities as much as possible
- Smaller companies that are “afraid” of applying for EU-funding should look in to an EIT membership